



Washington State
Health Care Authority

Foundational Community Supports Presents:

FCS and SH Intro/Becoming a Provider





WA State HCA FCS Team

**FCS Quality and Alignment
Analyst**

Kimberly.Castle@hca.wa.gov

FCS Program Administrator

Scott.Tankersley@hca.wa.gov

FCS TAP Program Manager

Maureen.Maples@hca.wa.gov

FCS Program Manager

Rayan.Orbom@hca.wa.gov

**Supportive Housing Program Manager
(East)**

Anessa.Williams@hca.wa.gov

**Supported Employment Program Manager
(East)**

Dawn.Miller@hca.wa.gov

**Supported Employment Program
Manager(West)**

Darren.Paschke@hca.wa.gov

**Supportive Housing Program Manager
(West)**

Jacklyn.Velasco@hca.wa.gov

An individual's HRSN* are a result of their community's underlying SDOH.

HRSN are an individual's unmet, adverse social conditions that contribute to poor health.

**Social Related Health Needs is the newly used terms used by Medicaid.



-
- Legislative direction to improve outcomes & implement EBPs
 - National support through 2 separate policy academies which led to strategic plans
 - Chronic Homeless Medicaid Benefit White Paper
 - Integrated managed care – move to a ‘whole person care’ approach
 - Demonstration grants and provisos
 - PORCH, BRIDGES, HARPS, BEST, TANF-SE pilot
 - Research reports – <https://www.dshs.wa.gov/ffa/rda/research-reports/dshs-integrated-client-databases>
 - Champions in Leadership Roles

Foundational Community Supports (FCS)



Supportive housing and supported employment services under 1115
Medicaid Transformation Project waiver (MTP)

Launched Jan 2018, 26,000+ individuals enrolled, 200+ providers

MTP is a 5-year renewable waiver

FCS addresses social determinants of health by removing barriers to
stable housing and employment, promoting self-sufficiency, and recovery

Now: Over 200 providers



Foundational Community Supports - Provider Map

This dashboard is produced and maintained by the Washington State Health Care Authority



Select Service Region:

(All)

Select Service County:

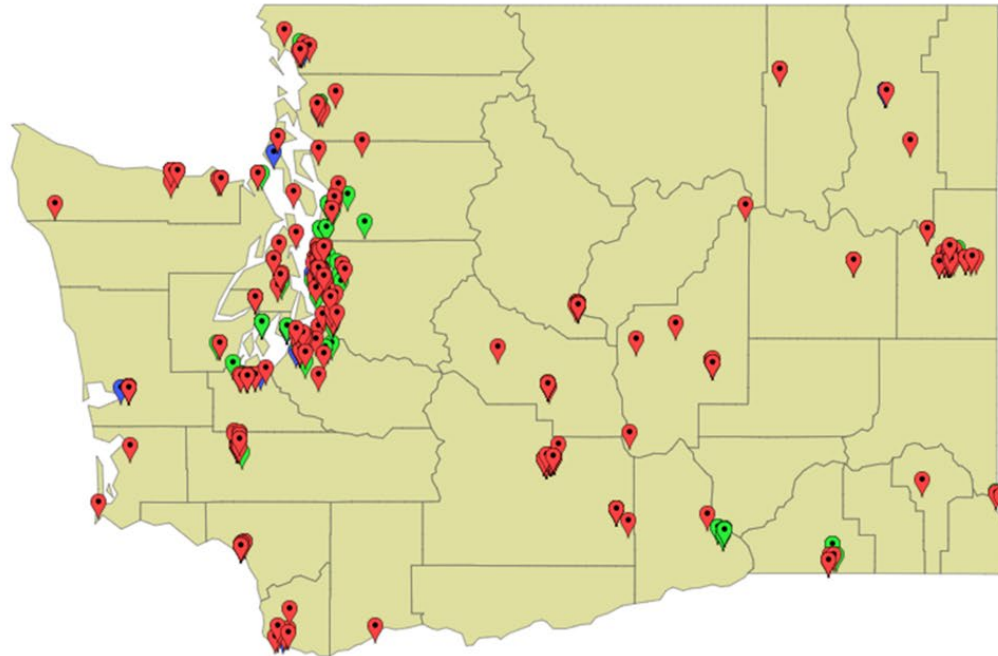
(All)

Select Provider Type:

(All)

Accepting External Referral?

(All)



Service Location - Name & County		County Served	
Chelan-Douglas Community Action Council	Chelan	Chelan	
		Douglas	
WORKATHON LLC	King	King	
Ability Employment Services Inc	Spokane	Ferry	
		Lincoln	
		Okanogan	
		Pend Oreille	
		Spokane	
		Stevens	
Aging and Long Term Care of Eastern..	Spokane	Spokane	
American Behavioral Health Systems ..	Lewis	Lewis	
American Behavioral Health Systems ..	Spokane	Spokane	
American Behavioral Health Systems ..	Spokane	Spokane	
American Behavioral Health Systems ..	Lewis	Lewis	
American Behavioral Health Systems ..	Snohomish	Snohomish	
American Behavioral Health Systems ..	Island	Island	
American Behavioral Health Systems ..	Snohomish	Snohomish	
American Behavioral Health Systems ..	Spokane	Spokane	
American Behavioral Health Systems ..	Lewis	Lewis	
American Behavioral Health Systems ..	Chelan	Chelan	
Answers Counseling	Pierce	Grays Harbor	...
		Mason	...
		Pierce	...
		Thurston	...
		Whatcom	...
Artisans	Spokane	Spokane	...
Asian Counseling & Referral Service -..	King	King	
Asian Counseling & Referral Service -..	King	King	
Asian Counseling & Referral Service -..	King	King	

Foundational Community Supports (FCS)

What it is

- Targeted Medicaid benefits that help eligible clients with complex health needs obtain and maintain housing and employment stability.
- Supportive Housing services
- Supported Employment services

What it isn't

- Ongoing payments for housing, rent, or room & board costs
- Wages or wage enhancements for clients
- Entitlement

Qualifying Factors

**Medicaid
Recipient**

Most types of Medicaid are eligible

Please look here for more information on eligible types of Medicaid

Age

16+ for services

**Meet the
requirements for
complex needs**

Have a **medical necessity*** that affects ability to live independently or function successfully

Meet at least one risk factor

- Supportive housing specific factors
- Supported employment specific factors

Health Needs / Medical Necessity*

(Need to meet at least 1)

Mental Health

- Mental health need where there is a need for improvement, stabilization or prevention of deterioration to functioning resulting from the presence of a mental illness.

Substance Use Disorder

- Diagnosed with a substance use disorder, as determined by meeting a one or higher level on the *American Society of Addiction Medicine Criteria*.

Activities of Daily Living (ADL)

- Needs assistance with three or more activities of daily living (ADL) or one or more hands-on ADL as determined by a Comprehensive Assessment and Reporting Evaluation (CARE) Assessment.

Homeless with a Disability

- The client is a homeless individual with a disability, determined by a coordinated entry assessment. *Individual assessed to have a complex health need, which is defined as a long continuing or indefinite physical condition requiring improvement, stabilization or prevention of deterioration of functioning (including ability to live independently without support).*

Supportive Housing Risk Factors

(Need to meet at least 1)

Chronic homelessness

- Homeless for at least 12 months or homeless on at least 4 separate occasions in the last three years (combined to equal at least 12 months). Note: This definition also includes individuals who previously met the HUD definition of chronic homelessness but have been housed in the last 60 days (time housed may not exceed 60 days).

Frequent or lengthy institutional contacts

- Two or more contacts in the past 12 months or 90 or more consecutive days within an institutional setting. Eligible settings include skilled nursing facility, inpatient hospital, psychiatric institution, correctional facility and Emergency Room (ER) visits.

Frequent adult residential care stays

- Two or more adult residential care stays within the past 12 months. Including adult residential care, enhanced adult residential care, assisted living facilities, adult family homes or residential treatment facilities.

Frequent turnover of in-home caregivers

- Three or more different in-home caregiver provider agencies used within the last 12 months

PRISM risk score

- Predictive Risk Intelligence System (PRISM) risk score of 1.5 or above. PRISM measures how much someone uses medical, social service, behavioral health and long-term care services.

Current Rates:

Supported Employment Benefit

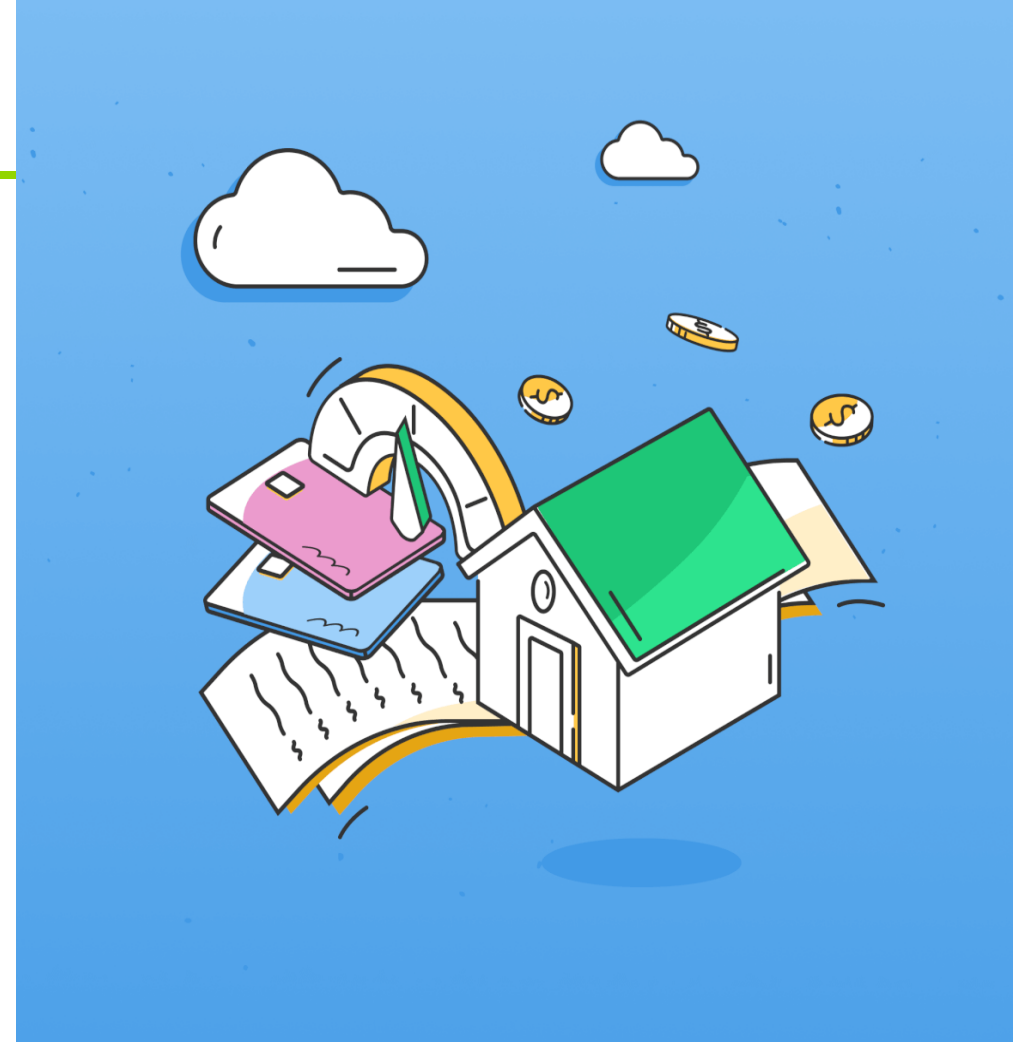
- 1 unit = **15 minutes** of service
- Limit of **120 units** (30 hours) of service per **6 month** authorization period
- Reimbursement rate of **\$27/unit** of service
- Services may be **reauthorized** if a participant continues to need services
- **“Exception to Rule”** authorization process is available for additional service units within a 6 month period for participants who have exceptional service needs

Supportive Housing Benefit

- Per diem rate
- Limit of **30 days** of service per **6 month** authorization period
- Reimbursement rate of **\$112/day**
- Services may be **reauthorized** if a participant continues to need services
- **“Exception to Rule”** authorization process is available for additional service units within a 6 month period for participants who have exceptional service needs

Pre-Tenancy Supports

- Conducting Assessments
- Coordination of Care
- Development of Community Supports
- Treatment Planning (Establishing short term & long-term goals)
- Advocacy
- Landlord Liaison
- Financial Skill Building
- Benefits Support



Tenancy Sustaining Services

- Coordination of Care
- Employment and/or Vocational Support
- Informal Community Support development
- Development of Independent Living Skills
- Advocacy
- Treatment Planning
- Increasing ADL's
- Retention
- Benefits Management
- Landlord Liaison



Principles of Permanent Supportive Housing

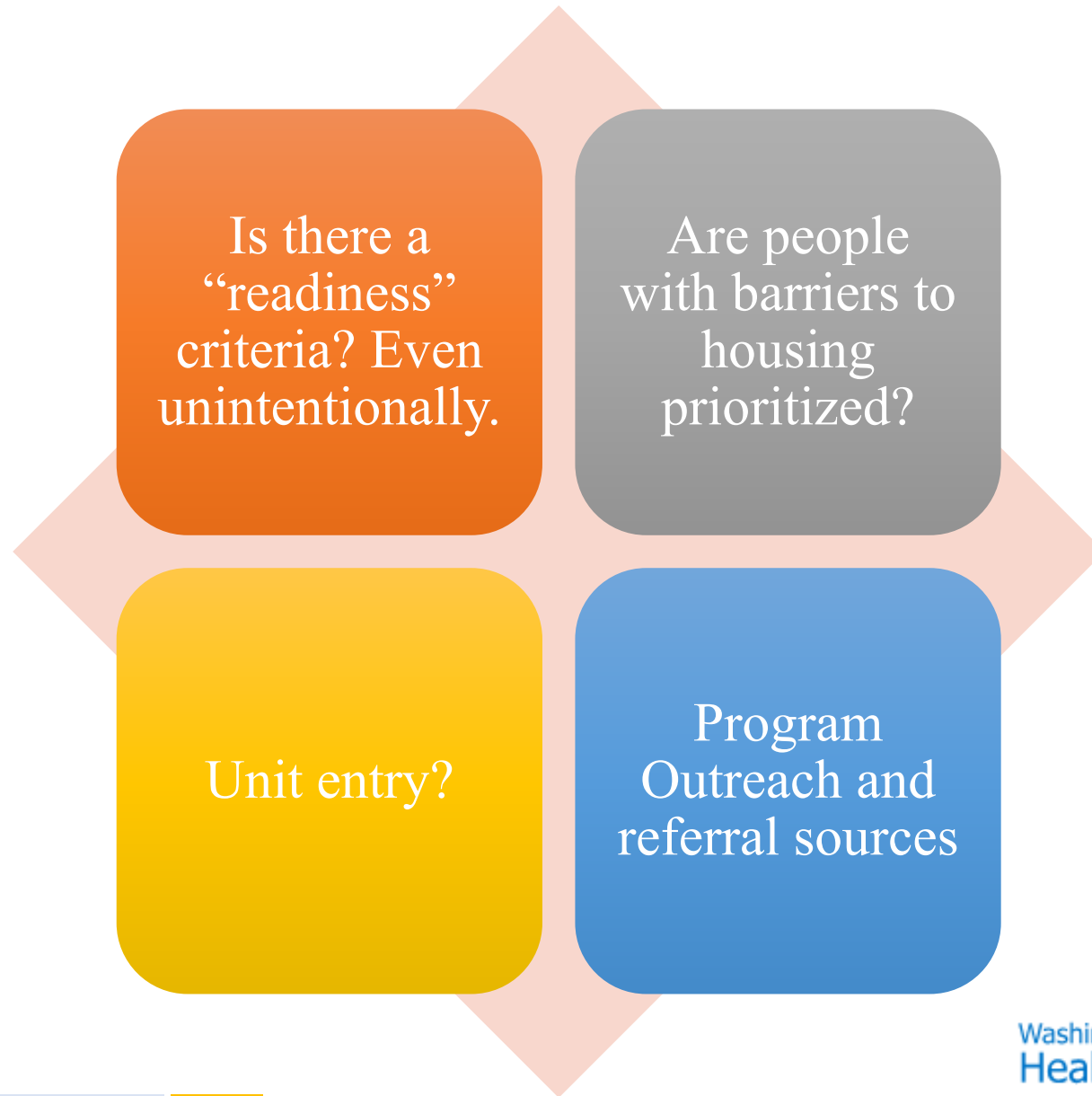


Fidelity: What is it? Does it matter?

- Evidence-Based Practices lead to increased outcomes and job satisfaction
- Outcomes are standardized
- Preserving the components that made the original practice effective can directly impact the success of desired outcomes.



Principle: Access to Housing



Principle: Choice of Housing

**Tenants have
choice of type of
housing**

Clean and sober housing,
apartment, house

**Real choice in
housing unit**

Are they shown multiple
units to choose from?

**Tenant can wait
without losing
their place in line**

Is there a waiting list? If
I want to wait for another
place to be available, do I
lose my position on the
waitlist?

**Choice of living
arrangements**

Does the tenant decide
who they live with?




VS



Principle: Rights of Tenancy

- ▶ Is there a lease in the tenant's name?
- ▶ What rights? Who's enforces these rights? (WAC, Federal, Lease and Program Rules as well as any other rules applied by subsidized housing. What rules are you bound by?)
- ▶ Does the tenant have to follow rules that are not typically found on a standard lease agreement?
 - ▶ No guests after 10 PM
 - ▶ Drug testing
 - ▶ Must be in services to live there

Landlord Liaison/Engagement

- Assessments aren't only for participants
 - Get to know your local housing community (do your research)
 - Create a landlord assessment
 - Market your program
 - Locate who to know or where to find information
- 

Decent, Safe & Affordable

**Inspections: HHS and
HQS
What percent of their
income must tenants
pay for rent?**

**Gentrification, filtering,
and concentrated
poverty?**



Locating & Securing, Safe & Affordable Housing

Locating

Locating: Utilize Community Resources, Search Online, Check Bulletin Boards, In-Car Searches *with & without participant present*, word of mouth, cold calls, don't give up!

Securing

Securing: Build Relationships w/Landlords, Follow Through, Market your Program, Come with Successes! Stay Positive, Advocate! Quality, Honor Choice and provide options!

Subsidy/Rental Assistance

Subsidy Type	Key Points
Diversion or Very Short-Term	<ul style="list-style-type: none">• One-time/very short-term• Accompanied by creative problem-solving• For clients experiencing homelessness or at risk of homelessness
Rapid Re-Housing	<ul style="list-style-type: none">• One-time or short-term (often up to 18 months)• Includes case management and housing search services• For clients experiencing homelessness or imminently at risk that will be able to pay rent on their own at end of program
Transitional Housing	<ul style="list-style-type: none">• Medium Term (12-24 months)• Includes case management, life skills education, and housing search• For clients experiencing homelessness that need time/skills to stabilize
Permanent Supportive Housing	<ul style="list-style-type: none">• Long-term or permanent (as long as the client needs it)• Intensive services including behavioral health support available.• For clients experiencing chronic homelessness or other high-risk situations for returning to homelessness.
Long-Term or Permanent Subsidies	<ul style="list-style-type: none">• Additional long-term or permanent subsidies• Services are usually not provided by the subsidy provider• For clients with low incomes and/or specific eligibility criteria.

➤ Housing Choice Vouchers

➤ HUD Subsidized Project Based

➤ Low Income Housing Tax Credit

➤ Low Income Public Housing

➤ Set asides (homeless, senior, disabilities)

Transitional Assistance Program

- Max spending estimated at \$5,000 per enrollee per 12 months
 - Rolling authorization for up to \$5,000 per 12 months
 - Spending over \$5,000 within a year for an enrollee *must* be approved by Wellpoint via ETP
- Covers certain housing-related costs that can be barriers to obtaining and maintaining affordable housing
 - Pays fees for IDs, application fees, move-in fees like first/last months rent, and more
 - Braidable funding compatible with longer-term rental assistance resources
 - FCS TAP is a short-term resource – no ongoing rents can be paid

Housing Integration

What does this mean?

- Are tenants placed in units set aside for individuals with disabilities?
- How does your client benefit from this? What about the community?

Types of housing

- a. Scattered Site
- b. Subsidized Housing
- c. Agency Operated Housing
- d. Transitional Housing

Housing Intervention Types

❖ Prevention

- ❖ Policies, practices, and interventions that reduce the likelihood that someone will experience homelessness.

❖ Diversion

- ❖ Goal is to help the person or household find safe alternative housing immediately, rather than entering shelter or experiencing unsheltered homelessness.

❖ Emergency Shelter

- ❖ A facility-based, night-by-night living arrangement that allows clients to enter and exit on an irregular or daily basis
- ❖ Night by night or long stay

❖ Rapid Rehousing (RRH)

- ❖ Provides short-term rental assistance and time-sensitive services

❖ Transitional housing (TH)

- ❖ A supportive – yet temporary – type of accommodation that is meant to bridge the gap from homelessness to permanent housing

❖ Permanent Supportive Housing (PSH)

- ❖ Integrates affordable rental housing with community-based supportive services

❖ Permanent Housing

- ❖ Permanent living in a building that is habitable

❖ Support Services Only



Separation of Housing and Services

Typically, low income/subsidized units come with case management attached and can create a blurred line for separation of services.

- Is the housing provider also providing services?
- Does the service provider collect rents?
- Do the service providers have an office located in the housing?

Flexible & Voluntary Services

Flexible: Is there a menu of options for types of services to choose from?

What about location, duration, frequency, availability, etc...

Can a person change the frequency and intensity of services?

Voluntary Services:
Varies with participant needs, not mandatory.

Can a person choose no services?

Are services person centered?

What's typical caseload size for service providers?

Are all services provided by a team?

Are services available 24/7?

Resources and things to consider

- Register in WEBS and OFM for future funding
 - <https://pr-webs-vendor.des.wa.gov/> and <https://ofm.wa.gov/it-systems/accounting-systems/statewide-vendorpayee-services/vendor-payee-registration>
 - Ensure your UEI is updated and correct
 - <https://justicegrants.usdoj.gov/news/how-to-locate-your-uei-04.05.2022.pdf>
 - <https://sam.gov/content/duns-uei>
 - Get on email list for upcoming trainings
 - Email Rayan.Orbom@hca.wa.gov to be added or go here: https://public.govdelivery.com/accounts/WAHCA/subscriber/new?topic_id=WAHCA_410
 - Register for Provider Alerts
 - <https://www.hca.wa.gov/billers-providers-partners/provider-alerts>
 - Explore documents on Wellpoint and HCA websites
 - <https://www.hca.wa.gov/about-hca/programs-and-initiatives/medicaid-transformation-project-mtp/initiative-3-foundational-community-supports-fcs>
 - <https://www.hca.wa.gov/about-hca/programs-and-initiatives/medicaid-transformation-project-mtp/foundational-community-supports-fcs-resources>
 - <https://provider.Wellpoint.com/washington-provider/patient-care/foundational-community-supports>
 - [Pathways to Housing](#) and [Pathways to Employment](#)
-

DBHR IS COMMITTED
TO PROVIDING
TRAINING ACROSS THE
STATE.

FCS NEWSLETTER

FCS TRAINERS

CHECK-OUT THE FCS EVENT
CALENDAR
[BIT.LY/FCS-CALENDAR](https://bit.ly/fcs-calendar)
FOR UPCOMING EVENTS
NEAR YOU!

INCENTIVES AVAILABLE
FOR PARTICIPATING IN
FIDELITY REVIEW
LEARNING
COLLABORATIVE